

EXHIBIT A

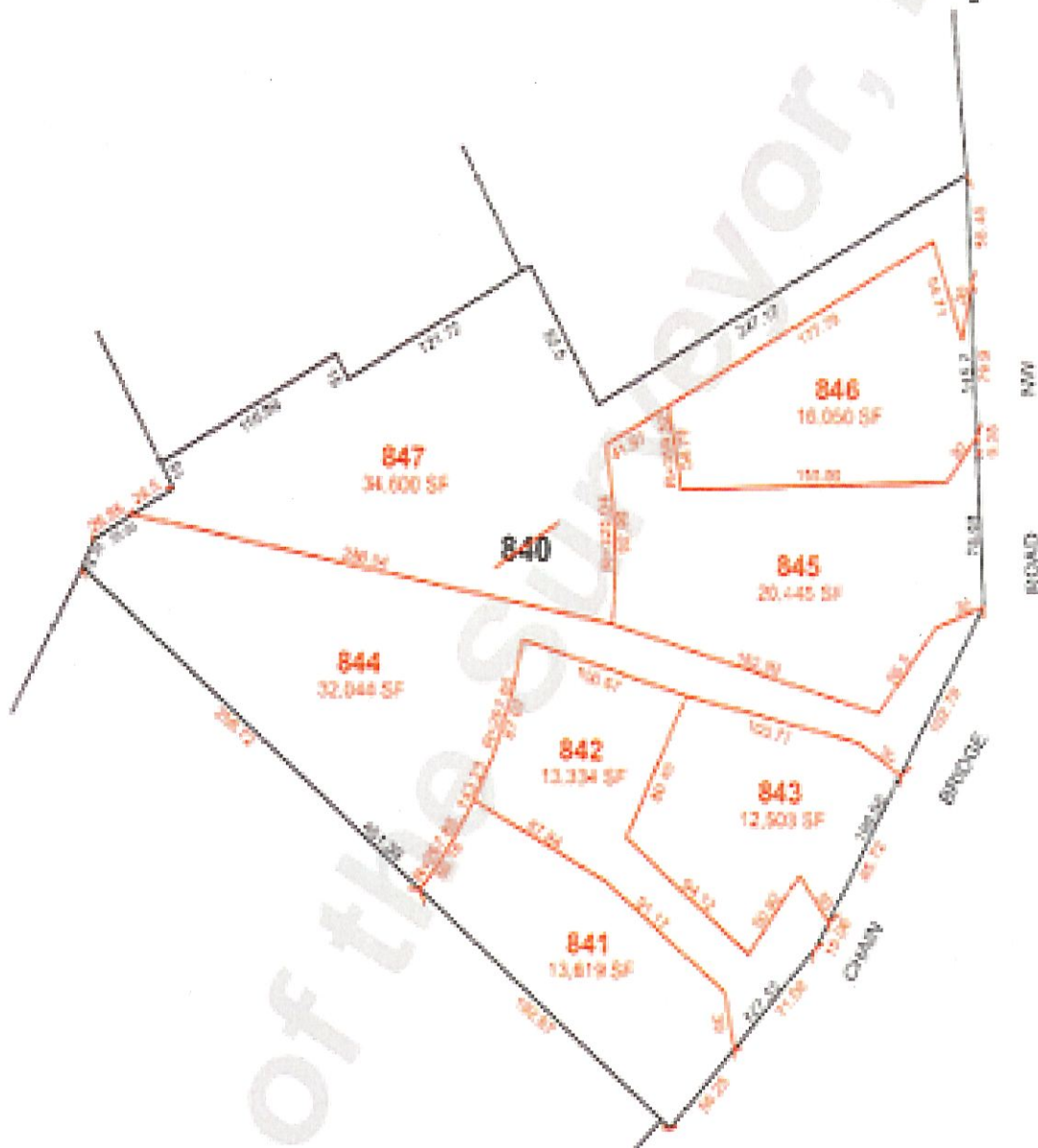
OFFICE OF TAX AND REVENUE
ASSESSMENT DIVISION

3884-2



ASSESSMENT AND TAXATION PLAT

Square 1425



David Smith 103383 10-7-14
Draftsman Reference Date

Scale, 1 inch = 80 ft.

The Office of Surveyor of the District of Columbia shall adopt this plat to record under the provisions of Chapter 7 of Title 47, District of Columbia Code, Designation of Real Property for Assessment and Taxation, and for other purposes.

Quinn Ferguson 10/23/14
Chief Assessor, Office of Tax and Revenue